

Product Sheet: Pump Open Sub for ME Plug (POS)

Product Description

The Pump Open Sub (POS) can serve as a temporary barrier when assembled with an appropriate ME plug. Several POS tools have been tested and qualified in accordance with the ISO 14310 international standard to validation grade Vo.

Product Application

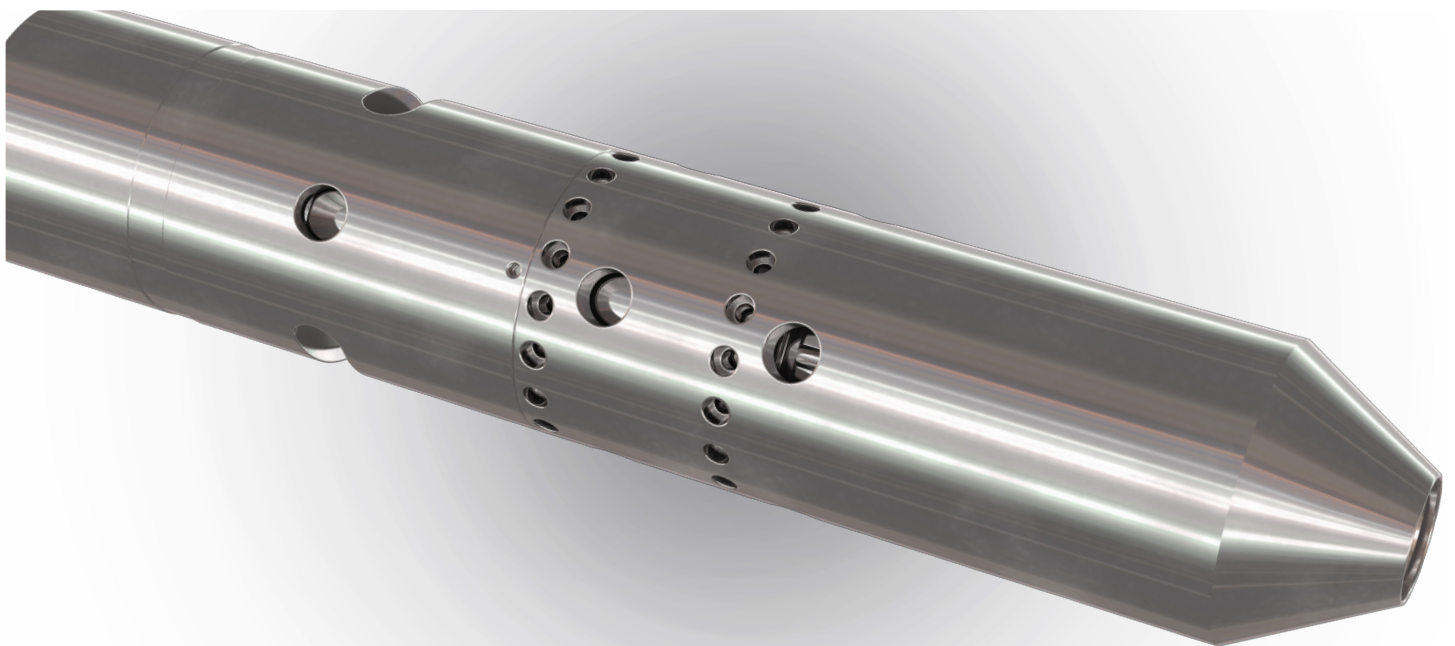
The Pump Open Sub will hold pressure from above up to a pre determined pressure level, at which point the POS will open permanently, enabling injection / production.

At setting depth the opening pressure over the POS is determined by the number of shear screws in the POS and the type of configuration used. When pressure is increased above the plug, the POS will stay closed until the downward force on the piston due to pressure overcomes the total shear value of the shear screws.

In differential pressure configuration the pressure level needed above the plug to open the POS is dependent on the pressure below the plug at setting depth. Whereas in absolute pressure/atmospheric chamber configuration, it is independent of the pressure below the plug as long as it is within rated values.

Product Benefits:

Several POS tools have been tested and qualified in accordance with the ISO 14310 international standard to validation grade Vo.



Product Sheet: Pump Open Sub for ME Plug (POS)

Product Features

- Allows temporary barrier
- Opens at predetermined differential pressure
- Has the option of remote equalization, enabling production/injection (when open)

Technical Specifications

POS	Weight (kg)	OD (in)	Min Flow Area (sq in)	Length (in)	MW ΔP^* Above	MW ΔP^* Below (psi)	Temp (C)	ISO 14310 Qualified
5.50*	42.8	5.50"	9.61	23.80	70% Nom Shear Pressure	5,000	150	Vo 5,000psi 4-100 °C
4.43	46.3	4.43"	6.6	20.18	70% Nom Shear Pressure	5,000	150	Vo 5,000psi 4-100 °C
4.21**	44.6	4.213"	6.6	42.71	70% Nom Shear Pressure	5,000	150	Vo 5,000 psi 4-115 °C
4.20*	46.4	4.213"	3.68	53.40	70% Nom Shear Pressure	5,000	150	Vo 5,000 psi 4-100 °C
3.25	16	3.25"	4.095	33.858	70% Nom Shear Pressure	5,000	150	Vo 3,000 psi 40-100 °C
2.52	8.8	2.52"	0.274	21.75	70% Nom Shear Pressure	3,000	150	Not tested

*Atmospheric chamber versions available

**Debris friendly version with unidirectional lock system

