

Product Sheet: Mechanical Puncher Tool (MPT)

Product Description

The Mechanical Puncher Tool (MPT) is a non-pyro technical, non-pressurized punching tool, designed for punching tubing to create communication between tubing and annulus.

Interwell's MPT is designed to be run combined with a plug run or as stand-alone punching tool.

A combined plug and MPT run allow you to set and pressure test the plug and to re-position the MPT before punching.

As the Setting Tool strokes, a knife with a cutting blade extracts from the MPT and cuts through the tubing wall, leaving a rectangular hole that will allow circulation. After punch sequence is done, the knife returns back into the Mechanical Puncher Tool.

Product Application

The MPT is mounted onto the lower end of a EST to a standard #20 adapter, making both Slickline or E-Line applicable when run as a stand-alone punching tool.

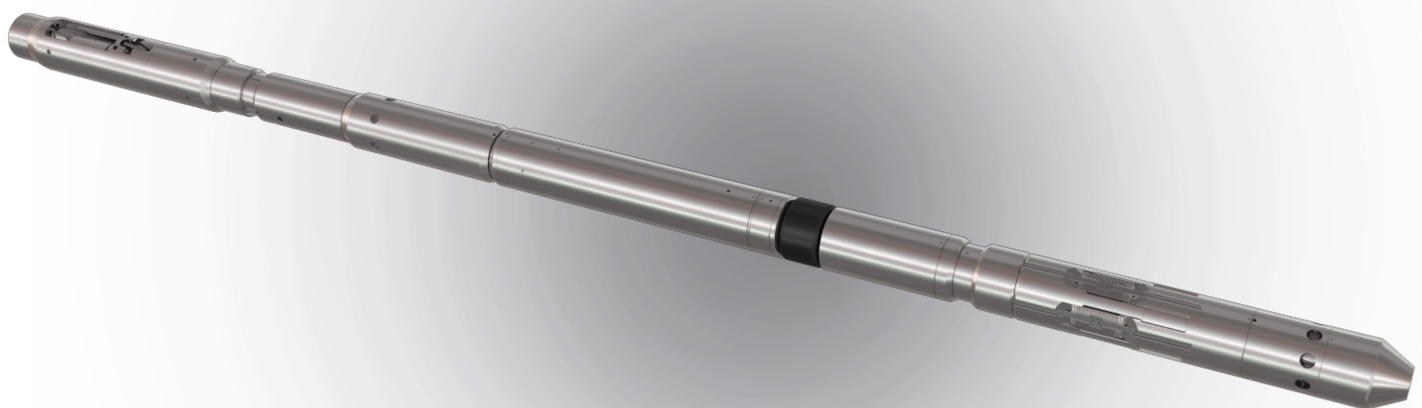
When run as a combined plug and punch tool the Interwell E-Line Surface Power is used to control the two operations.

Product Benefits:

The Mechanical Puncher Tool (MPT) can be run to set a plug and punch a hole in the tubing in one run.

By using the MPT there is no need for a second run and operator will save valuable rig time.

The MPT is run together with Vo qualified plugs and packers.



Product Sheet: Mechanical Puncher Tool (MPT)

Product Features

- Set Plug and Punch in one run
- No explosives
- No chemicals
- Short make up length
- Standard #20 Adapter connection

Technical Specifications

Model	3-75"	4-35"	5-50"
Upper Connection	Standard E4 #20 Adapter	Standard E4 #20 Adapter	Standard E4 #20 Adapter
Make Up Length (Without setting tool)	24. 57" (624 mm)	21. 260" (540 mm)	24. 592" (625 mm)
Make Up Length (With 3, 50" EST)	93. 75" (2381 mm)	90. 45" (2297 mm)	93. 78" (2382 mm)
Maximum OD	3. 75" (95. 25 mm)	4. 35" (110. 5mm)	5. 50" (139. 7mm)
Lower Connection	N/A	Standard E4 #20 Adapter	Standard E4 #20 Adapter
Tubing to Punch	4. 5" OD, #12. 6, L80	5. 5" OD, # 17-20, L80	7" OD, # 26-#29-#32 L80
Approximate punched hole size	105 mm ² (7x15mm)	192 mm ² (8x24mm)	224 mm ² (8x28mm)
Plug & Punch option	N/A	Yes	Yes

