

Product Sheet: Down-Hole Sensing GS (DSGS) Pulling Tool

Product Description

The wireline Down-Hole Sensing GS (DSGS) Pulling Tool is designed to fit the industry's standard GS style fish necks. The tool is a wireline service tool, designed to retrieve Bridge Plugs, Packers, Straddles and other intervention devices from the well bore by engaging an internal type GS fishing neck.

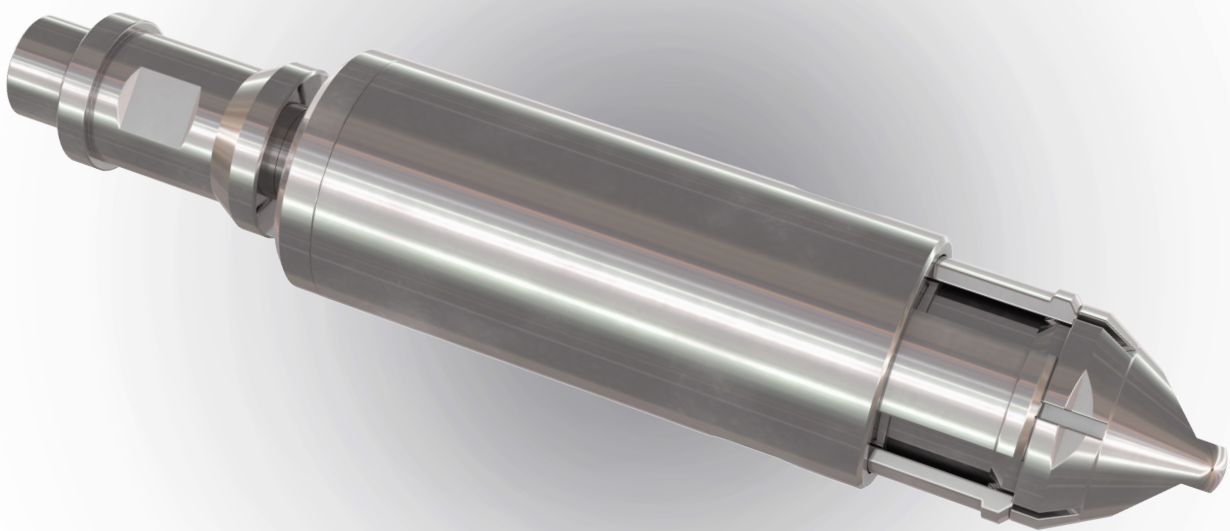
Product Application

To release the DSGS from the down-hole device, downward jarring is applied. Its high strength design ensures both compatibility with the running string and the heavy pulling and jarring forces expected during difficult pulling jobs.

Product Benefits:

The Down-Hole Sensing GS Pulling Tool retrieves various intervention devices.

Taking the industry to the next level, the DSGS also collects down-hole information such as jarring forces and well environment.



Product Sheet: Down-Hole Sensing GS (DSGS) Pulling Tool

Mechanical Double Shear Tool

The double shear release feature (DU application) is an application for the DSGS. It eliminates the chance of accidental tool release when engaging the fish neck, as can be experienced with the standard DSGS tools. The tool is designed with a safety lock mechanism, which disables the shear down release action of the DSGS until it is engaged and upward jarring has been established.

Down-Hole Sensing Tool

The Down-Hole Sensing GS Pulling Tool can monitor jarring forces and well environment data. The Down-hole information collected through the DSGS Pulling Tool enables verification of applied forces from surfaces and increased understanding of equipment, techniques and down-hole environment.

Product Features

- Standard GS style Fish Neck
- Shear release feature (DU application)
- Monitors jarring forces and the well environment

Technical Specifications

Model/Nominal Size	OD	Fish Neck to Retrieve
3.00"	2.72"	3.00"
4.00"	3.62"	4.00"
6.00	5.51"	6.00"

