

Product Sheet: Multi Setting Pulling (MSP) Tool

Product Description

The Multi Setting Pulling Tool (MSP) is designed to set and pull TH Plugs and Isolation sleeves multiple times on drillpipe.

A snap sleeve design combined with a jarring bolt allows the MSP Tool to maintain consistent value. This enables the tool to set and pull the plug multiple times without the need for shearing parts. The combination with the standard Interwell Flow Release GS design enables release after setting.

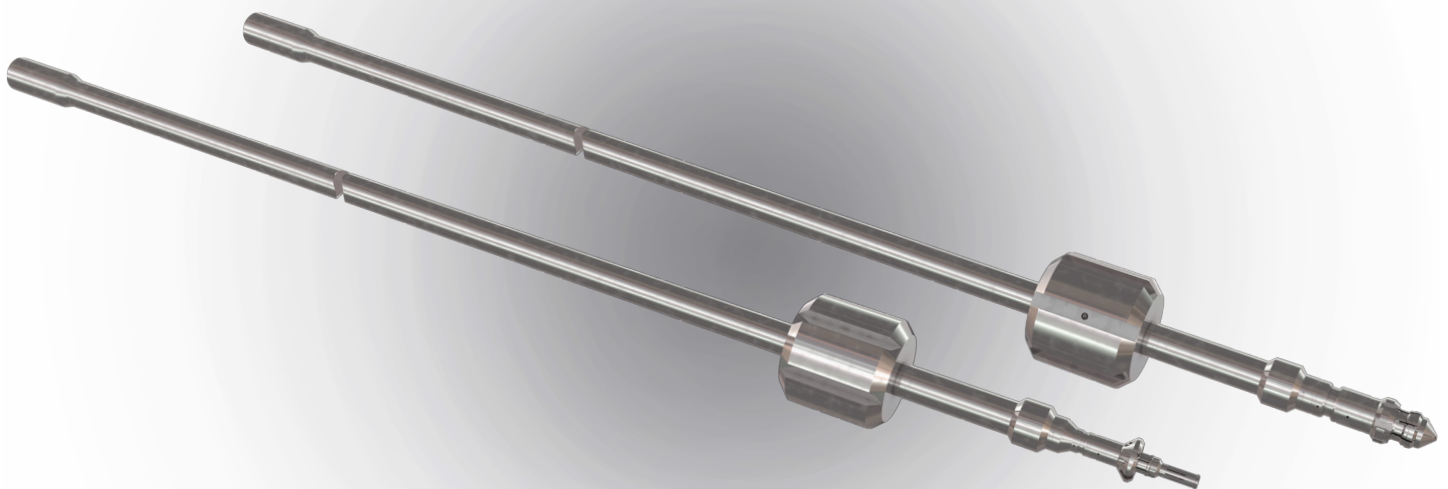
Optimized flow path through the flow release tool.

Product Benefits:

The Multi Setting Pulling Tool (MSP) can set and retrieve TH Plugs and Isolation Sleeves multiple times on drill pipe.

Product Application

The MSP Tool sets and retrieves TH-Plugs and Isolation Sleeves. By circulating fluid, the MSP Tool can be released safely from the Fish Neck. As a contingency, a ball can be dropped to allow release of the Flow Release GS.



Product Sheet: Multi Setting Pulling (MSP) Tool

Product Features

- Sets and retrieves TH Plug and Isolation Sleeve without the use of wireline.
- Resets itself for multiple runs.
- No shearing parts.
- Dual flapper design for well control.
- Standard Interwell Flow Release GS design.

Technical Specifications

For Tubing Hanger Plugs	3.5" MSP FRT	4" MSP FRT	5" MSP FRT
OD (Centralizer)	18.50" (469.9 mm)	18.50" (469.9 mm)	18.50" (469.9 mm)
Nozzle Size	0.205" (5.2 mm)	0.205" (5.2 mm)	0.205" (5.2 mm)
Make Up Length	548" (13.9 m)	540" (13.7 m)	574" (14.5 m)
Make Up Torque	37,400 FT-lbs	37,400 FT-lbs	37,400 FT-lbs
Orifice	M13x1	M13x2	M13x3
Ball Size	0.75" (3.5" FRT) (19.1 mm)	0.75" (4" FRT) (19.1 mm)	N/A
Max Tensile Load (Core)	60,248 lbf	85,800 lbf (40,000 lbf - Jarring Bolt)	85,800 lbf (40,000 lbf - Jarring Bolt)
Will Retrieve	5.25"/5.75" Tubing Hanger Plug	(40,000 lbf - Jarring Bolt)	6.41" / 7.0" Tubing Hanger Plug

For Isolation Sleeves	5" MSP FRT	7" MSP FRT
OD (Centralizer)	18.50" (469.9 mm)	18.50" (469.9 mm)
Nozzle Size	0.197" (5 mm)	0.197" (5 mm)
Make Up Length	545" (13.8 m)	546.8" (13.9 m)
Make Up Torque	37,400 FT-lbs	37,400 FT-lbs
Orifice	3/4 - 14 NPT	3/4 - 14 NPT
Ball Size	0.75" (19.1 mm)	1.00" (25.4 mm)
Max Tensile Load (Core)	200,000 lbf	340,000 lbf
Will Retrieve	5" GS Profile	7" GS Profile