

Product Sheet: Matrix Plug(MP)

Product Description

The Matrix Plug (MP) is a new generation retrievable bridge plug series. It is a short plug with a relatively small element expansion and is meant for applications above well restrictions. It is qualified according to the ISO 14310 international standard.

Product Application

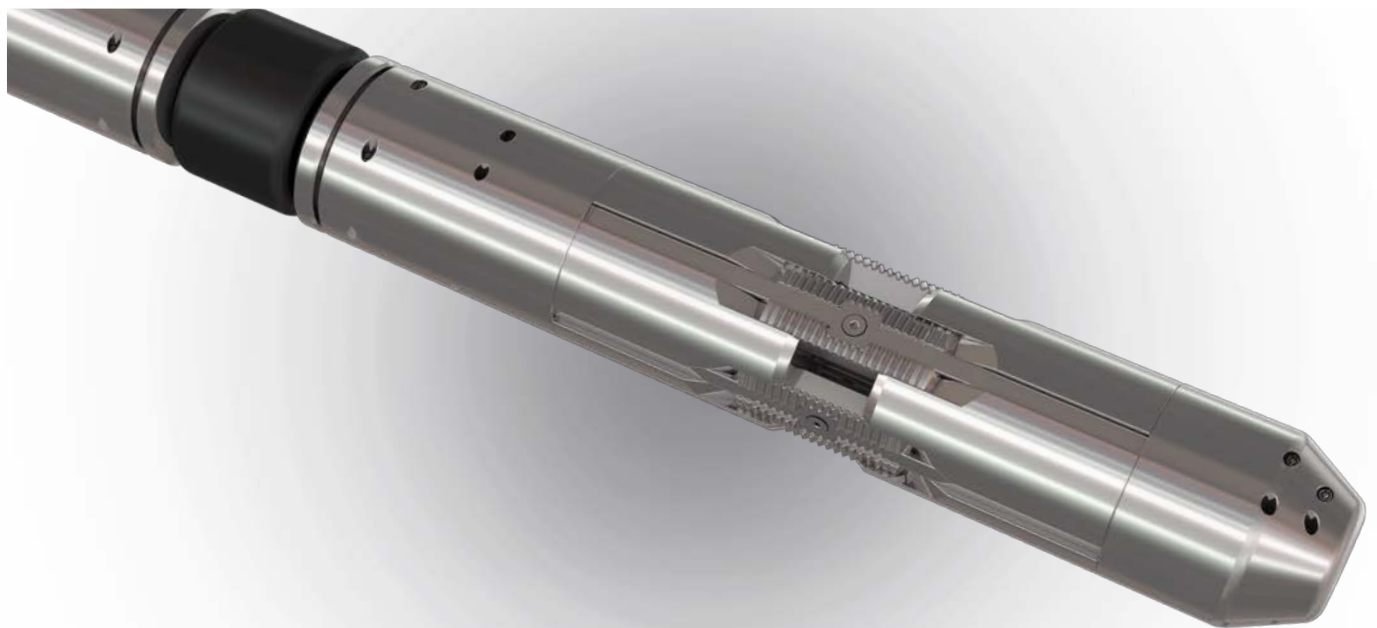
The MP is a retrievable bridge plug that has applications in any phase of a well's lifecycle such as:

- Temporary well barrier during well construction phase
- Several workover applications, such as wellhead- or tree repair
- Water shut off applications
- Permanent well barrier during plugging and abandonment (P&A) phase

Product Benefits:

The Matrix Plug (MP) is of a new generation retrievable bridge plug series.

This cost effective bridge plug has over 20 years innovative experience applied to its design.



Product Sheet: Matrix Platform (MP)

Product Features

- Industry's shortest retrievable bridge plug
- Re-dress capable in field
- Robust construction
- Novel design
- Tried and tested packer concept
- Extensive track record on packer concept

Technical Specifications

Csg. Size	Csg. Wt (lbs/ft)	Model	OD	GS	Min Setting ID	Max Setting ID	Pressure rating	Temperature rating
7"	26# to 32#	572-700 MPL	5.72"	6"	5.988"	6.379"	5,000 psi (345 bar)	60 °C
4.5"	10.5# to 15.1#	375-450 MPL	3.75"	4"	3.826"	4.052"	5000 psi	121 °C

