

Product Sheet: Gauge Accessories

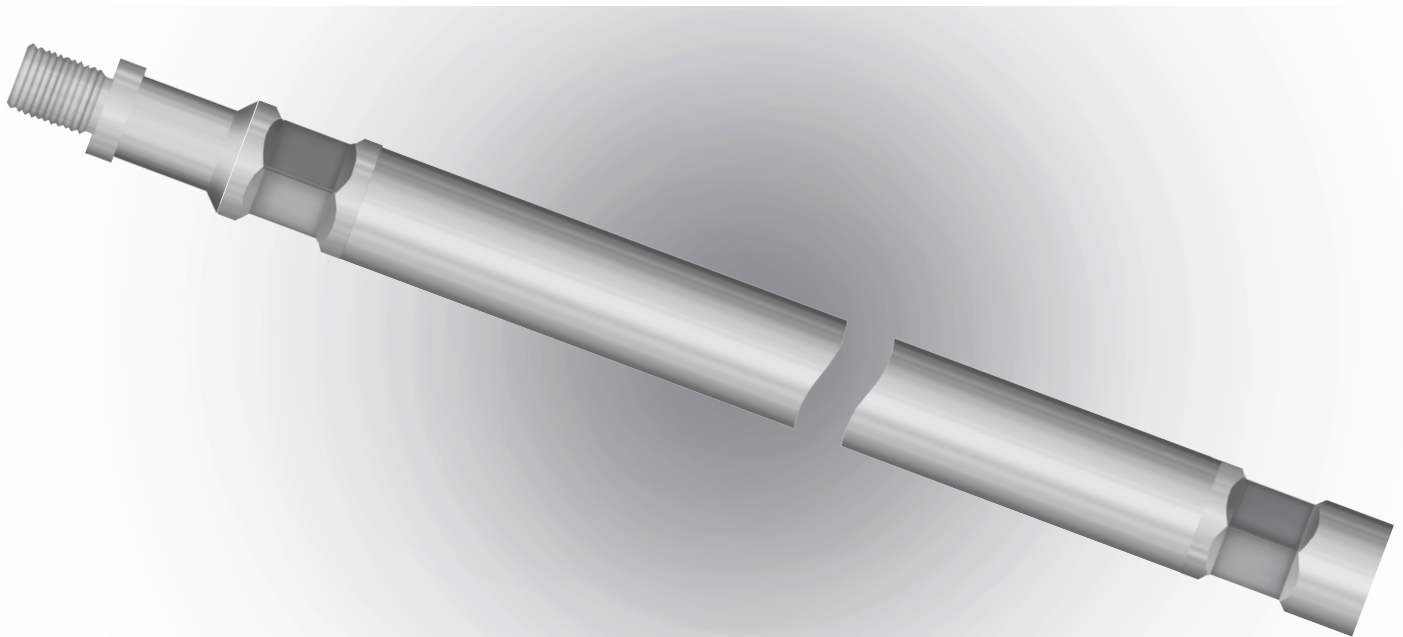
1 11/16" Bomb Well Carrier

Product Description

The Gauge Bomb Well Carrier is used to house several down-hole gauges. The tool's purpose is to provide balanced shock absorbing for the sensitive gauges during well intervention operations. By doing this, the carrier supports the gauges to measure and collect pressure and temperature data.

Technical Specifications

Model	Material	OD	Thread Type	Length (in & mm)*
BWC sweet version	4140, SS304	1.6875"	15/16" SR Pin 15/16" SR Box	41.732" / 1,060 mm
BWC sweet version	4140, SS305	1.6875"	15/16" SR Pin 15/16" SR Box	78.740" / 2,000 mm
BWC sour version	Inconel 718, Hastelloy C-276	1.6875"	15/16" SR Pin 15/16" SR Box	78.740" / 2,000 mm
BWC sour version	Super duplex, 420M	1.6875"	15/16" SR Pin 15/16" SR Box	78.740" / 2,000 mm



Product Sheet: Gauge Accessories

1 11/16" Bomb Well Carrier

Product Features

- Sweet or Sour Options
- Corrosion Resistant NA CE MR0175
- Custom Pin or Box Connections Upon Request

