

Product Sheet: Dual Back Pressure Valve (DBPV)

Product Description

The Dual Back Pressure Valve is a dual flapper check valve. It is designed to minimize flow restriction in the intended flow direction and to prevent reverse flow and seal off pressure.

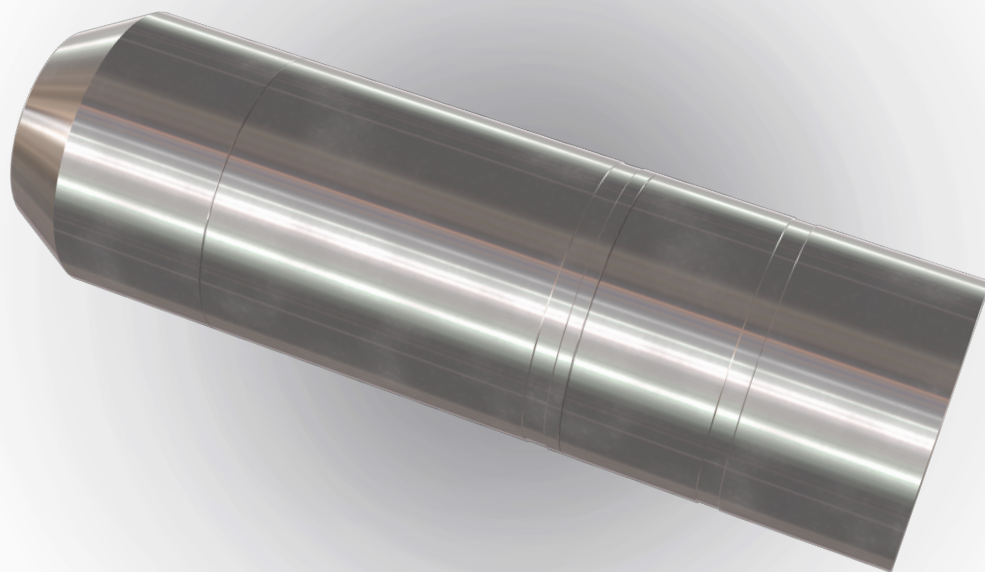
Product Application

This particular configuration tool has been made for use in combination with ME Packer, but can also be used in combination with other tools. It may be configured in either production mode or injection mode as requested.

Product Benefits:

The Dual Back Pressure Valve (DBPV) can in combination with an ME Packer be run in either production or injection mode.

The DBPV is ISO V6 (Vo criteria) tested.



Product Sheet: Dual Back Pressure Valve (DBPV)

Technical Specifications

Model	1.75"	3.27"	3.75"
OD	1.75" (44.45 mm)	3.270" (83 mm)	3.75" (95.2 mm)
ID	0.6" (15 mm)	1.180" (30 mm)	0.984" (25 mm)
Makeup length	9.85" (250.25 mm)	11.142" (283 mm)	12.852" (326.4 mm)
Upper connection	39 Stub Acme-12 Box	Tr 74x3 Box	77 Stub Acme 8 TPI
Max. working pressure	5000 psi (345 bar)	5800 psi (399 bar)	10,000 psi (690 bar)
Max. working temperature	150°C (302°F)	150°C (302°F)	150°C (302°F)
Min. flow area	0.27 in ² (176.6 mm ²)	1.094 in ² (707 mm ²)	0.76 in ² (490.63 mm ²)

Model	4.20"	5.35"
OD	4.213" (107 mm)	5.354" (136 mm)
ID	1.654" (42 mm)	2.280" (58 mm)
Makeup length	14.409" (366 mm)	17.402" (442 mm)
Upper connection	Tr 98x3 Box	Tr 125x3 / Tr 129x3 Box
Max. working pressure	5000 psi (345 bar)	5000 psi (345 bar)
Max. working temperature	150°C (302°F)	150°C (302°F)
Min. flow area	2.141 in ² (1,385 mm ²)	4.094 in ² (2,642 mm ²)

