

Product Sheet: Electronic Setting Tool (EST)

Product Description

Interwell's Electronic Setting Tool (EST) is a non-pre-pressurized, non-pyrotechnic setting tool for the installation of downhole isolation devices such as bridge plugs, packers, straddles and other products such as gauge hangers. It is resettable in the field without the need for redress and is the shortest setting tool available on the market.

The EST converts its internal power into a downward axial force to mechanically set Interwell or third party products. Controlled by an Electronic Module, its processes are logged to create a setting profile for quality assurance of the set product and for health monitoring. Run on Slickline, Digital Slickline or E-Line, the EST goes through an automatic shutdown sequence after setting and at full stroke the oil is recirculated, preventing any pressure build-up.

Full metal connection to the shear stud allows the EST to be jarred free if it becomes necessary. Options for real time surface display of well pressure, temperature, inclination and operational parameters such as internal pressure, voltage, current and RPM are available with the Surface Powered version. Bluetooth communication for set-up and pre-run checks at surface and log download after the job has been completed is another option.

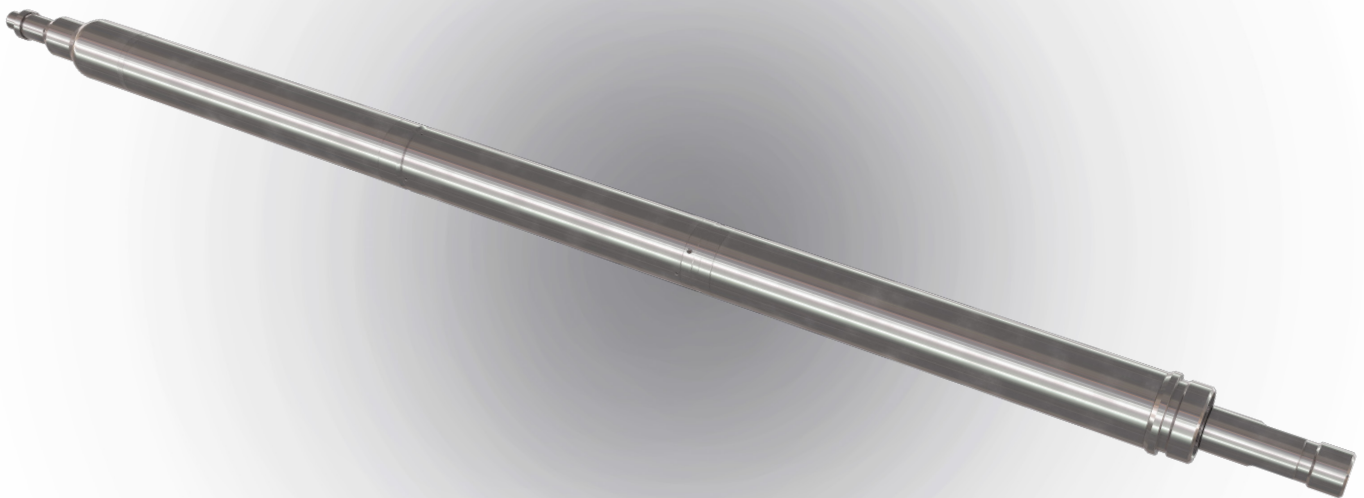
Product Benefits:

Extensive run record, field resettable, reliable, high output force, long stroke, data logging.

Surface powered e-line version enables surface control and real time display of well pressure, temperature, inclination and other EST parameters.

Wireless communication before and after run in hole, with the Bluetooth compatible version: Check tool status, set and start timer, download log, all features which can be performed using Bluetooth.

Simplified Integrated Operations with IO Centers



Product Sheet: Electronic Setting Tool (EST)

Product Application

- Installation of downhole products such as Bridge Plugs, Packers, Gauge Hangers and Straddles
- Barrier Verification System
- Tubing Puncher

Product Features

- Field Resettable
- Large output force
- Bluetooth (optional)
- Shortest setting tool on the market
- Debris tolerant, fully self-contained
- Non-pre-pressurized, non-pyrotechnic
- Suitable for Integrated Operations (IO)
- Does not rely on well pressure for operation
- Able to be jarred free from the plug if necessary
- Well pressure logged during setting process (optional)
- Surface display of well parameters and EST parameters during setting (optional)

Technical Specifications

EST Tool Size (OD)	1.75"	2.13"	2.70"	3.50"	4.50"
Max Stroke	7"	10"	10"	15" / 18" *	24"
MUL - Shortest avail (mm)	112.2" (2850)	105.3" (2674)	80.67" (2049)	64.9" (1648)	100.2" (2545)
Maximum Working Pressure	10 000 psi	10 000 psi	10 000 psi	10 000 psi	10 000 psi
Maximum Setting Force	17 000 lbf	25 000 lbf	33 000 lbf	52 500 lbf	85 000 lbf
Maximum Tensile Load Slickline	26 000 lbf	42 000 lbf	55 000 lbf	55 000 lbf	**
Maximum Tensile Load E-Line	26 000 lbf	42 000 lbf	50 000 lbf	50 000 lbf	50 000 lbf
Upper Connection Slickline	15/16-10 UNS	15/16-10 UNS	1-1/16-10 UNS	1-1/16-10 UNS	**
Upper Connection E-Line	1-3/8" GO Box	1-3/8" GO Box	1-3/8" GO Box	1-3/8" GO Box	1-3/8" GO Box
Lower Connection	IW #5	IW #5	E4 #10	E4 #10 / E4 #20	E4 #40 / E4 #20
Max Temperature	140°C	140°C	150°C	150°C	100°C

* 18" stroke only if fitted with the 5.20" Extending Accessory Kit (EAK) for setting 520-963 HEX. A minimum hydrostatic pressure of 50 bar is required in this configuration. Contact Interwell for configurations available for your application.

** The 4.50" EST is available with E-Line Powered only.