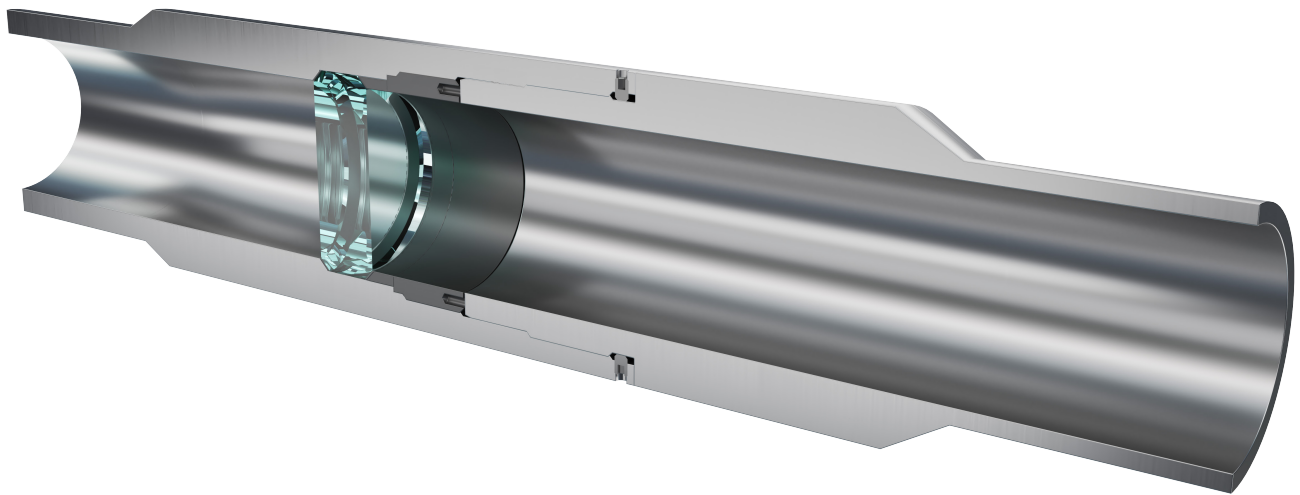


Inter Removable Barrier Device – Mechanical Open (IRBD-MO)



Description

The IRBD-MO is a bidirectional barrier plug, assembled with the required pup joint size in both ends. The assembly is integrated as part of the completion string and is qualified according to the ISO14310 Vo and ISO14998 Vo.

The plug has an initial closed state and a final open state. It's mechanically activated to the open state by either a mill or spear, depending on deployment; coiled tubing, wireline and jointed pipe may be used. The glass element has excellent physical properties, designed to withstand extreme bidirectional loads and high temperatures. Only a small volume of glass is required to hold the load and the glass disintegrates into small particles after removal, leaving a full-bore ID through the assembly for production and future intervention.

Inter Removable Barrier Device – Mechanical Open (IRBD-MO)

Application

- Barrier against the reservoir
- Packer setting device
- Fluid loss control device
- Pressure testing device

Benefits

- Efficient removal
- No Interwell personnel required for installation or removal
- Low volume and particle size when barrier element shatters
- Small volume and particle size when barrier element shatters
- ISO14310 Vo and ISO14998 Vo qualified bidirectional and gas tight barrier
- Can be run as part of the completion string or below an intervention packer

Technical Specifications

| Model | ID | OD | Pressure Rating | Temperature Rating |
|---------|-------|-------|----------------------|--------------------|
| 300-464 | 3.00" | 4.64" | 690 bar / 10 000 psi | 150 °C / 300 °F |
| 391-550 | 3.91" | 5.50" | 518 bar / 7500 psi | 150 °C / 300 °F |

Notes

- ID is excluding the end connections
- Other sizes and ratings available upon request, please contact us for details
- Can be delivered with various steel and elastomer materials