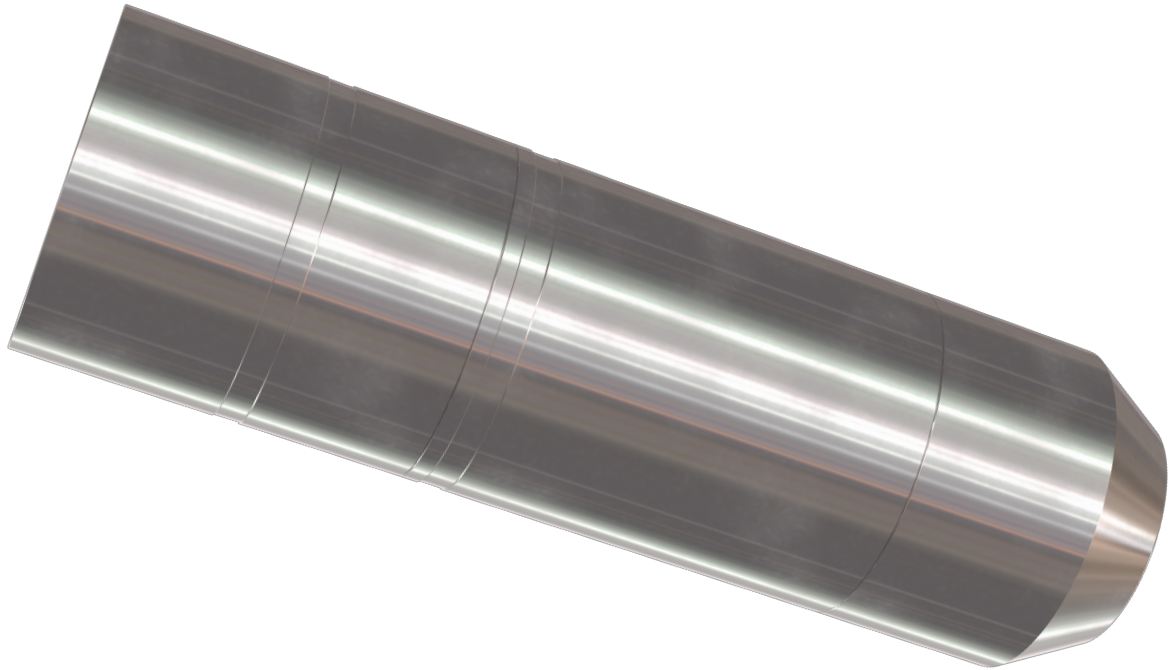


Dual Back Pressure Valve (DBPV)



Description

The DBPV is a dual flapper check valve designed to minimise flow restriction in the intended flow direction and to prevent reverse flow and seal off pressure.

Application

This particular configuration has been made for use in combination with an ME Packer, but can also be used in combination with other tools. It can be configured in either production mode or injection mode as requested.

Benefits

- Run in either production or injection mode (in combination with an ME Packer)
- ISO V6 Qualified

Dual Back Pressure Valve (DBPV)

Technical Specifications

Model	1.75"	3.27"	3.75"	4.20"	5.35"
OD	1.75" (44.45 mm)	3.270" (83 mm)	3.75" (95.2mm)	4.213" (107 mm)	5.354" (136 mm)
ID	0.6" (15 mm)	1.180" (30 mm)	0.984" (25 mm)	8.6" (42 mm)	2.2" (58 mm)
Makeup length	9.85" (250.25 mm)	11.142" (283 mm)	12.852" (326.4 mm)	14.409" (366 mm)	17.402" (442 mm)
Upper connection	39 Stub Acme-12 Box	Tr 74X3 Box	77 Stub Acme 8 TPI	Tr 98X3 Box	Tr 125X3 / Tr 129X3 Box
Max. working pressure	5000 psi (345 bar)	5800 psi (399 bar)	10,000 (690 bar)	5000 psi (345 bar)	5000 psi (345 bar)
Max. working temp	105 °C (302 °F)	105 °C (302 °F)	105 °C (302 °F)	105 °C (302 °F)	105 °C (302 °F)
Min. flow area	0.27 in ² (176.6 mm ²)	1.094 in ² (707 mm ²)	0.76 in ² (490.63 mm ²)	2.141 in ² (1.385 mm ²)	4.094 in ² (2.642 mm ²)