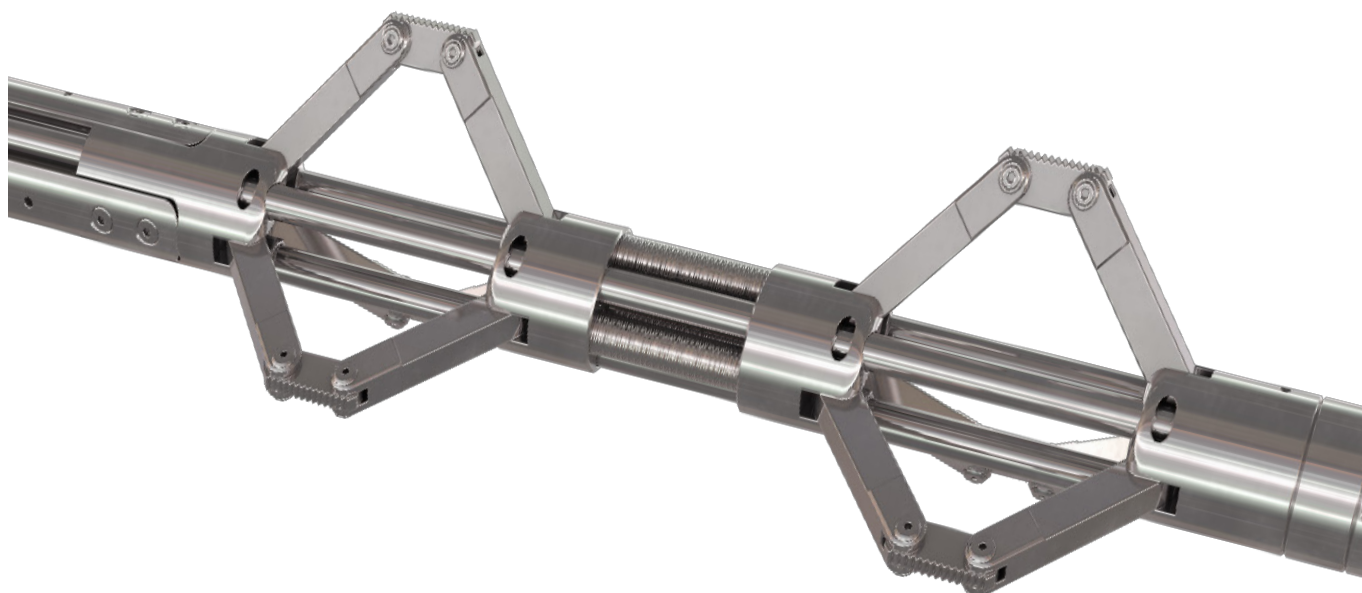


High Expansion Gauge Hanger (GH)



Description

The high expansion GH provides a reliable anchor for hanging off memory gauges and a variety of other tools. It has an ultra-slim design which allows it to be deployed through narrow restrictions or smaller completion tubing and set in larger ID liners/casings. Most importantly, the slim design minimises the restriction to flow, enabling better quality data to be recorded during production and/or injection conditions.

The GH provides a cost effective solution for data acquisition, with a variety of adaptor kits, allowing one size of GH to be set in a wide range of tubing sizes, weights and grades.

Application

The GH is most commonly used to hang off memory gauges in production and injection wells. However, it can also be used for anchoring abandonment equipment or swell packers.

High Expansion Gauge Hanger (GH)

Benefits

- Low flow restriction.
- Other sizes available on request.
- Can be run on slickline, e-line, CT and pipe.
- Uses standard setting and retrieving tools.
- High expansion combined with an ultra-slim design allows for deployment through narrow restrictions and smaller tubing, and setting in much larger tubing.

Technical Specifications

Model	Casing Size	Casing Weight (lbs/ft)	Adapter Kit	OD	Flow Area Restriction in Max Set	Length in Run Position
150	2 7/8"	6.4-8.7	288	1 1/2"	56%	0,870m (34.25")
150	3 1/2"	9.2-13.7	350	1 1/2"	44%	0,922m (36.30")
150	4" 4 1/2"	9.5-13.2 10.5-16.9	450	1 1/2"	31%	1 m (39.37")
200	4" 4 1/2"	9.5-16.1 10.5-16.9	550	2.0"	44%	1,312m (51.65")
200	5" 5 1/2"	15-23.2 15.5-26	550	2.0"	35%	1,4m (55.12")
200	6 5/8" 7"	20-32 26.3-37.7	700	2.0"	27%	1,482m (58.35")
288	5" 5 1/2"	15-18 15.5-26	550	2 7/8"	47%	1,315m (51.77")
288	6 5/8" 7"	20-32 26.3-37.7	700	2 7/8"	35%	1,395m (54.92")
288	9 5/8" 10 3/4"	40-58.4 55.5-65.7	1075	2 7/8"	20%	1,863m (73.35")
288	10 3/4" 11 3/4"	55.5-31.75 71-47	1175	2 7/8"	9%	2,111m (83.110")