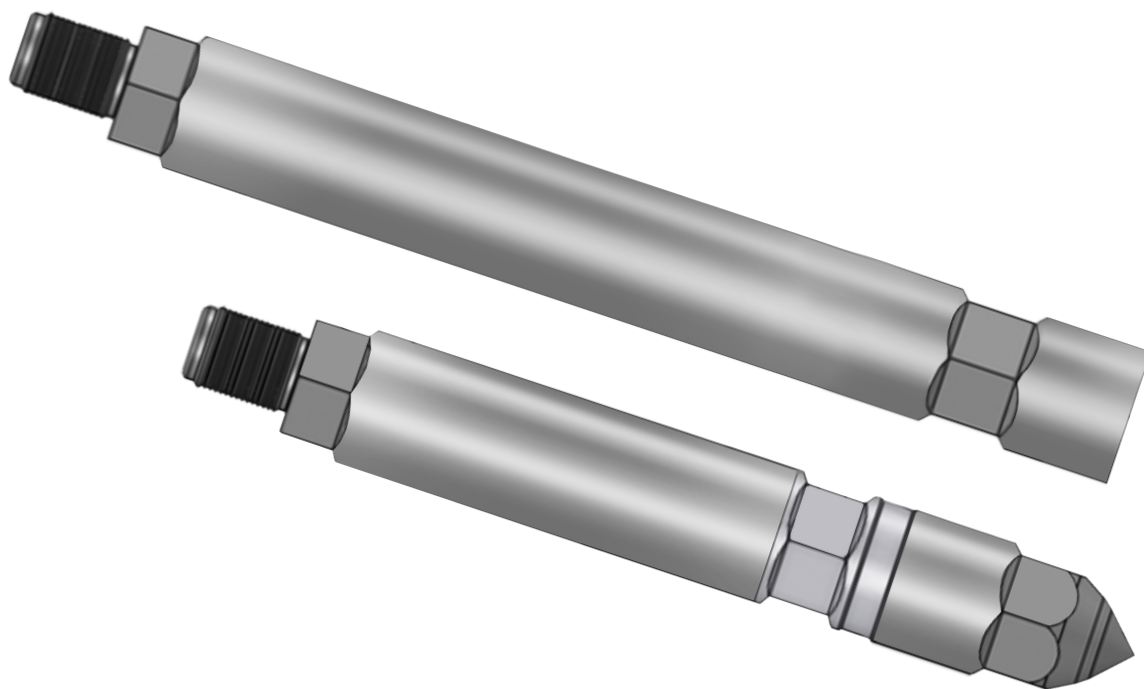


1 1/4" Welded Piezo III Memory Gauge (MPG)



Description

The MPG is designed to collect and store downhole temperature and pressure readings, providing accurate information about the well conditions. By plugging in the battery, the operator starts the gauge and the program sequence. The tool stops when the battery or power supply is removed. Jobs can be downloaded individually, as a set or merged together depending on preference.

Application

The MPG can be utilised when there's a need to monitor offset fractures, build-ups, drawdowns, DFIT's, for isolation tests or simple gradient surveys.

Benefits

- Electron Beam Welded.
- 1 Million Sample Capacity.
- Inconel 718 (NACE MRO 175).
- Shock Mounted Electronics for Reliability.
- Can provide over 1 year of 30-Second sample rate data when used with 'C' Cell Battery at 125 °C.

1 1/4" Welded Piezo III Memory Pressure Gauge (MPG)

Technical Specifications

	Pressure	Temperature
	1,034 bar (15,000 psi)	177 °C
Accuracy up to	0.03% F.S	0.5 °C
Resolution	0.0003% F.S	0.005 °C
Drift	<0.2069 bar / year (<3 psi / year)	< 0.1 °C / year
Capacity	1 Million Samples	
Communication Method	USB	